

Apheleia

Humanities International Association
For Cultural Integrated Landscape Management



Story: Helena Zemánková

Text: Luiz Oosterbeek, Helena Zemánková

Drawings, photos: Helena Zemánková

Pictures: A.C. Paredes Cardoso Centro Histórico de Abrantes

Translation: Martina Skupeňová

Graphic concept: Helena Zemánková, Ľubomír Kipila

Graphic design and print preparation: Ľubomír Kipila, Lumina studio

Print: Legia spol s.r.o., Poříčí 5, Brno

Published by APHELEIA

ISBN: 978-80-214-6198-7

his publication is in copyright. Subject to statutory exception and to the provisions of relevant collective licensing agreements, no reproduction of any part may take place without the written permission of the authors.

©2023 Photos and drawings Helena Zemánková

©2023 Layout Ľubomír Kipila, Lumina Studio

Apheleia

Humanities International Association
For Cultural Integrated Landscape Management

This bouquet of Mação honors the 10th anniversary of APHELEIA



The 10th anniversary of APHELEIA



Text

Luiz Oosterbeek - (english)

Luiz Oosterbeek - (portuguese)

Text

Joao Coroado, Président de l'ÍPT - (english)

Joao Coroado, Président de l'ÍPT - (portuguese)

Text

Luiz Oosterbeek - (english)

Luiz Oosterbeek - (portuguese)

Text

Vasco Estrela , Maire de Mação - (english)

Vasco Estrela , Maire de Mação - (portuguese)

Apheleia meeting in Caceres









Apheleia

Humanities International Association
For Cultural Integrated Landscape Management

20



MAÇÃO PORTUGAL

52



AUDITÓRIO ELVINO PEREIRA MAÇÃO

68



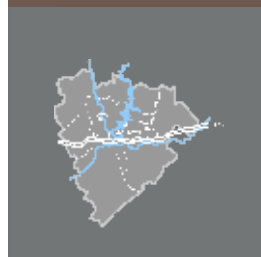
MUSEU DE ARTE PRÉ-HISTÓRICO

80



PARC ARCHEOSOCIAL DE MAÇÃO

90



MÉDIO TEJO

Apheleia

Humanities International Association
For Cultural Integrated Landscape Management

MAÇÃO
PORTUGAL



Text

Luana Campos , Professeur a l ' Université Pantanal en Amazonie - (english)

Luana Campos , Professeur a l ' Université Pantanal en Amazonie - (portugaise)

Blossoming spring Mação, full of citrus scent of citrus, welcomes invited speakers at APHELEIA seminars every year. The seminars are organized by Prof. Luiz Oosterbeek from the Polytechnic Institute of Tomar in Portugal and his team.

Professor Oosterbeek is the president of the International Council for Philosophy and Human Sciences and UNESCO -IPT chair holder for Humanities and Cultural Integrated Landscape management. His numerous memberships in Portuguese and international institutions and friendships with important experts allow him to send out transdisciplinary invitations to eminent personalities.

Many of the personalities have already been involved in the creation of the Apheleia project and its transformations over years. Their lectures enrich the annual seminars and provide them with a truly multidisciplinary character.

Educators and students of many specialized programmes, courses and workshops also participate at the seminars. The friendly atmosphere is created by the open approach of the staff at the Instituto Terra et Memoria and by cordiality of the Mação people.

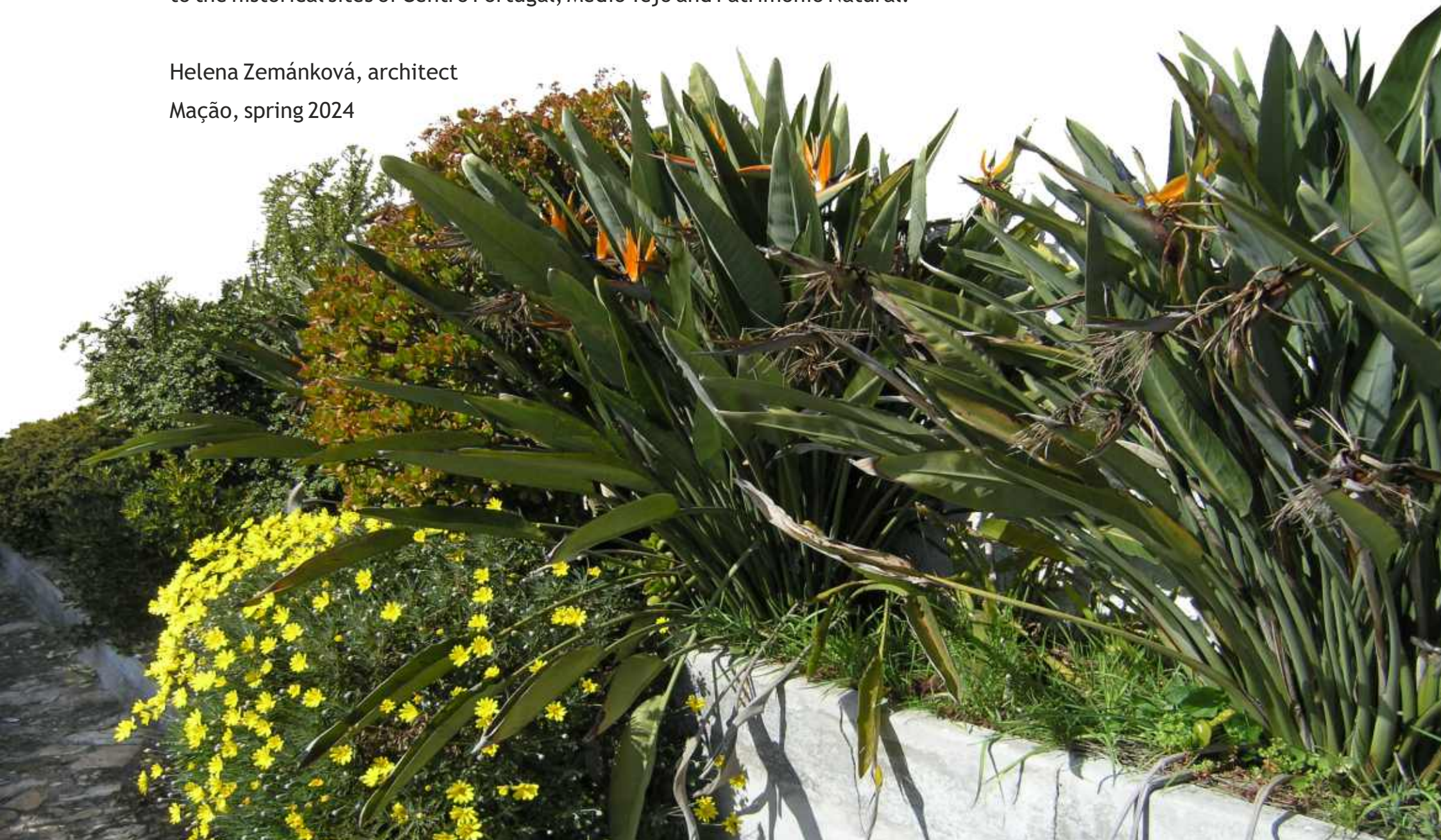
This small booklet documents more than ten years of cooperation, workshops, excursions and other activities.

The booklet should pay tribute and thanks not only to the main authors of the Apheleia project, but to all those who participated at the creation and implementation of the Apheleia project during its previous stages.

The photographs and drawings also show some of the cultural events held in Mação and the visits and excursions made to the historical sites of Centro Portugal, Médio Tejo and Património Natural.

Helena Zemánková, architect

Mação, spring 2024





PAYAGE
DE MGAO 2



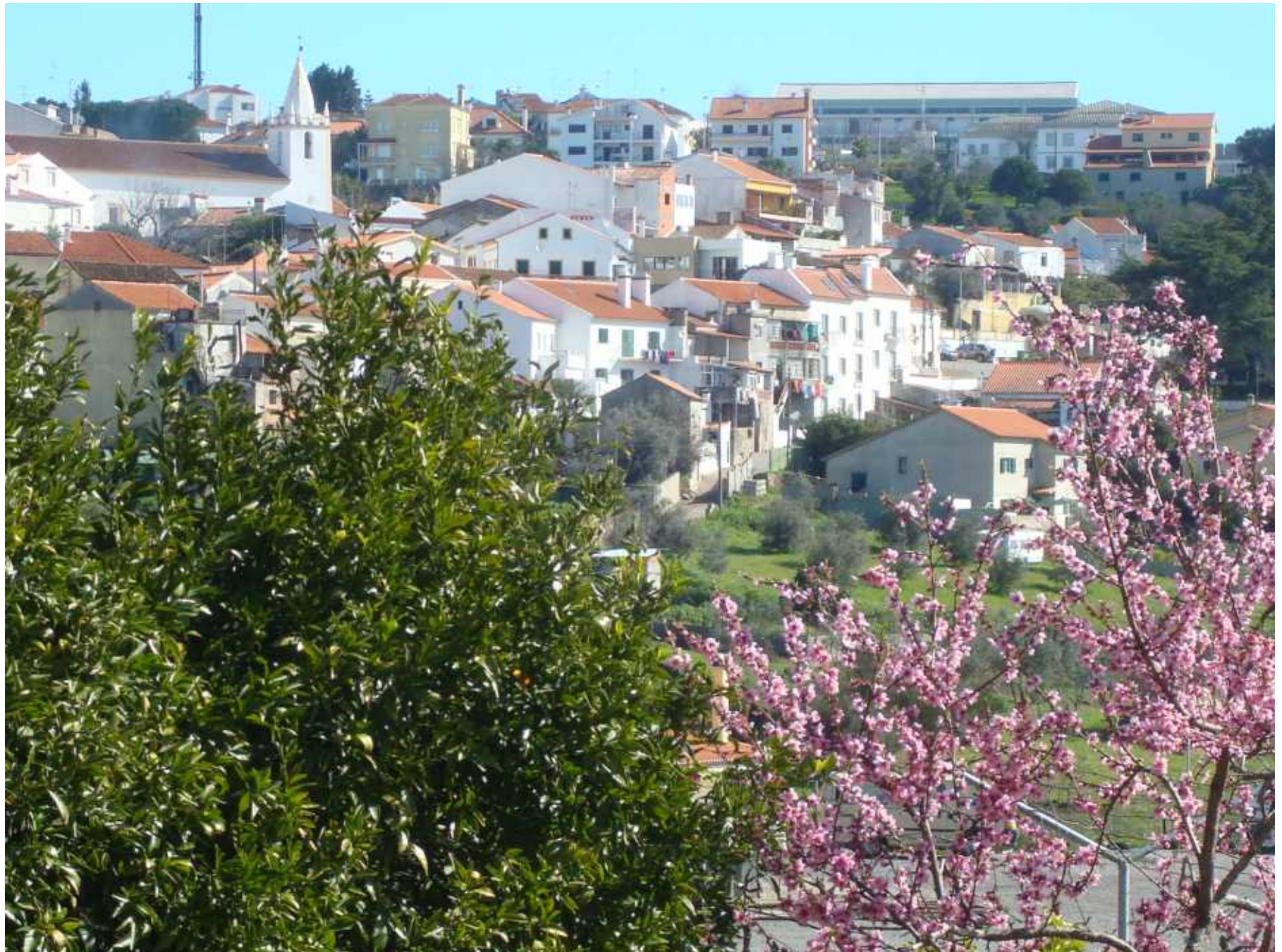
2016







The charming village Mação













Reuse of former primary school in Macao - Pedro Cura presented crafts and prehistoric cooking







Students in the exterior of Auditório Elvino Pereira















Exposition of Helena Zemánková - Milieu insulaire d'Ouessant





Agrupamento de Escolas Verde Horizonte

Cultural evening in professional school - delicious dinner enriched by Fado



The Midday - time for informal debate during lunch



Restaurante O Godinho





Friendly atmosphere, nice dinner and accomodation for all participants of seminairs APHELEIA in Mação



AUDITÓRIO

ELVINO PEREIRA MAÇÃO
PORTUGAL





Centro Cultural
Eivuno Pereira

In the past 10 years, over 100 scholars and 200 research, students have been involved in the APHELEIA seminars, also preparing publications. APHELEIA started as an EU funded project, becoming an International Association in 2018, that eventually became a member of the International Council for Philosophy and Human Sciences (CIPSH). It intervened in the UNESCO project "Broadening the scope of sustainability science" and became relevant in the conceptualization of the new programme BRIDGES (of UNESCO). Its members have been active in several projects, among which the establishment of UNESCO and CIPSH chairs, new Master and PhD programs and relevant initiatives such as The Jena Declaration.

In 2023 the Aheleia seminar in Mação, Portugal.

The 9th edition of this series and the 10th anniversary of the beginning of APHELEIA networking.

Apheleia

Humanities International Association
For Cultural Integrated Landscape Management





Opening of seminar by Prof. Luiz Oosterbeek



Discussion in auditorium between professors and students



Lecture about prehistoric instruments (such as flints)







Exposition of student's work - new use of abandoned stone deposits







Concert in Auditório Elvino Pereira in Mação





MUSEU

DE ARTE PRÉ-HISTÓRICO
E DO SAGRADO VALE DO TEJO





Text

- Luiz Oosterbeek and Anabela Pereira Borraiheiro'' - EN





Mariquinhas, cara linda,
Salsa da minha varanda,
Caixinha dos meus segredos
Onde meu coração anda

Onde meu coração anda,
Onde trago os meus sentidos,
Onde guardo as saudades,
Dos meus tempos mais queridos.

Canto popular da região de Mação





MUSEU DE ARTE PRÉ-HISTÓRICA DE MAÇÃO





International workshop in Mação - Museu de Arte Pré - Histórica







PARC

ARCHEOSOCIAL DE MAÇÃO









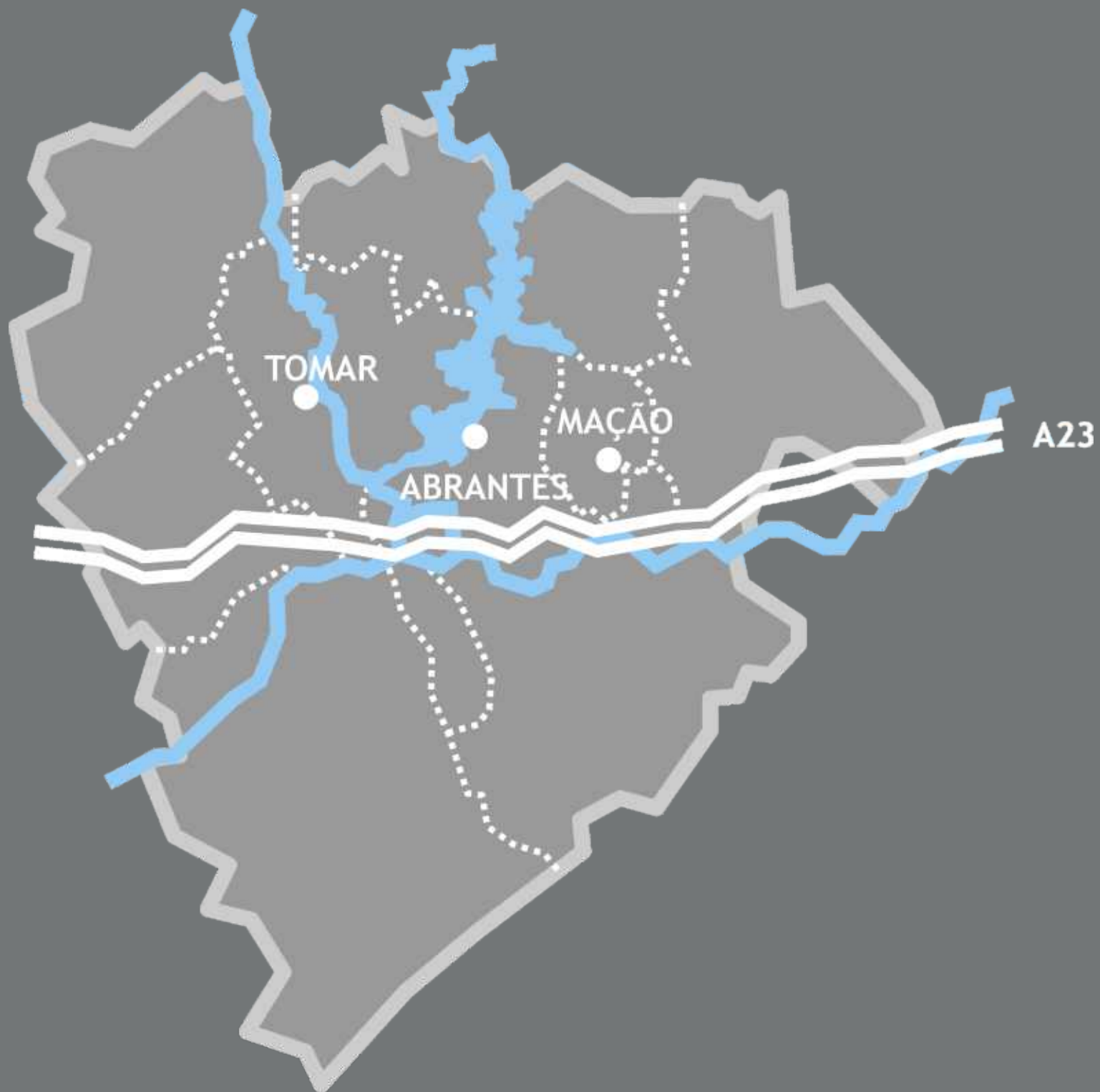








MÉDIO TEJO



The annual seminars of APHELEIA project in Mação are accompanied by cultural events and excursions enriching the participants by significant cultural monuments in the central part of Portugal where the river Tejo flows. Thus this chapter is titled Medio Tejo.

Médio Tejo

1. Archeological Park Ocreza
Parque Archeológico e Ambiental do Ocreza
Arte rupestre do Vale do Ocreza
2. Castelos dos Templarios
Convento de Cristo
Património da Humanidade - classificado Monumento UNESCO 1983
3. Aqueduto dos Pegoes
4. Castelo de Almourol originais fortalezas no século XVI.
classificado Monumente Nacional 1910
5. Barquinha Parque
6. Casevel - Castro Verde
7. Santarém
8. Castelo de Abrantes
9. Núcleo Museológico de Ortiga - Mação
10. Paul do Boquilobo, Colhereiro Platalea leucorodia
reserva natural, da biosfera
zona de proteccaõ especial para as aves
11. Tomar, one of the first medieval cities in Portugal,
a world heritage site revived by the powerful influence of the Order of the Knights Templar

Apheleia

Humanities International Association
For Cultural Integrated Landscape Management

Archeological Park Ocreza





PASSAGE 20
8 01



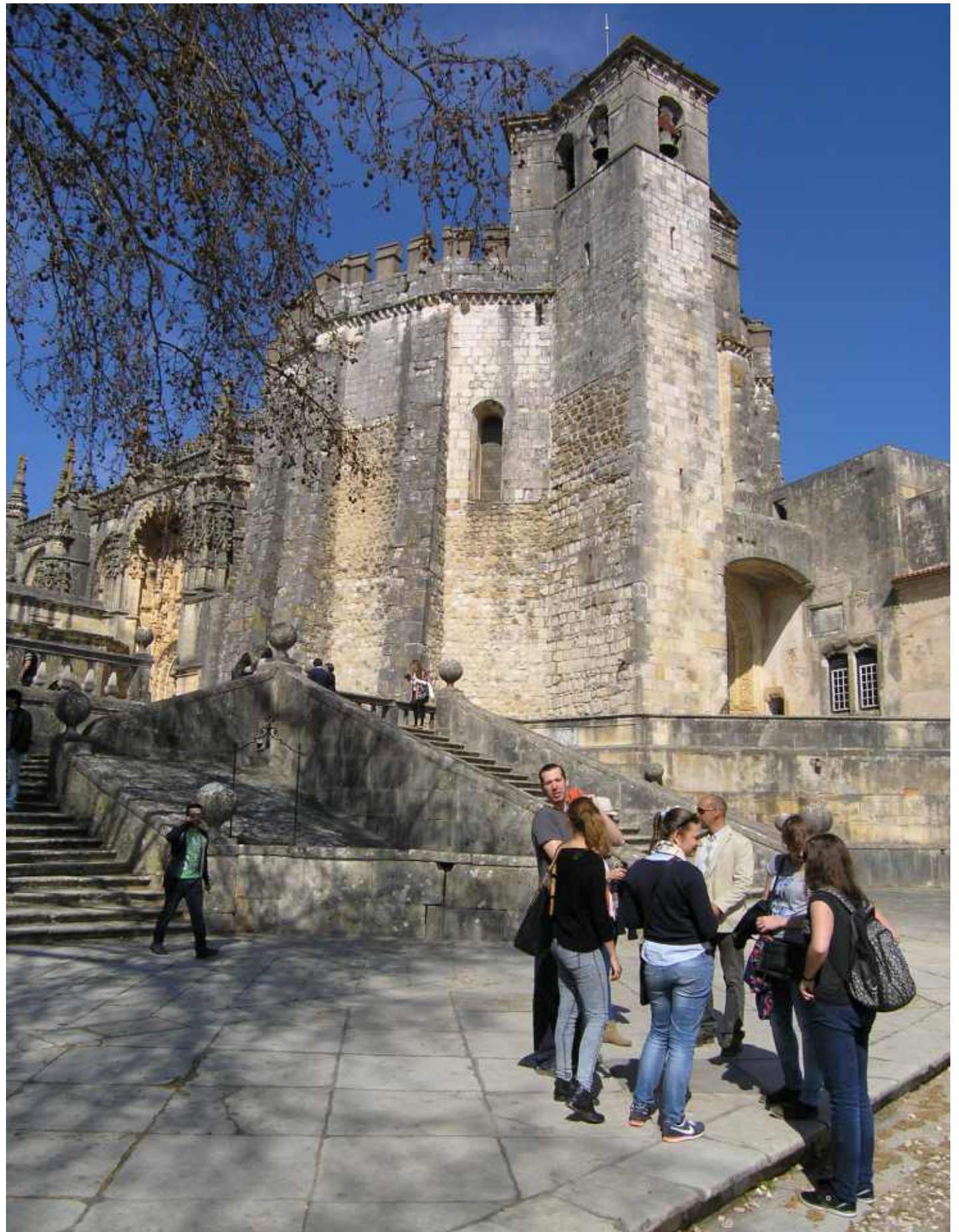
OCNE 20
8 01



Castelos dos Templarios

Convento de Cristo



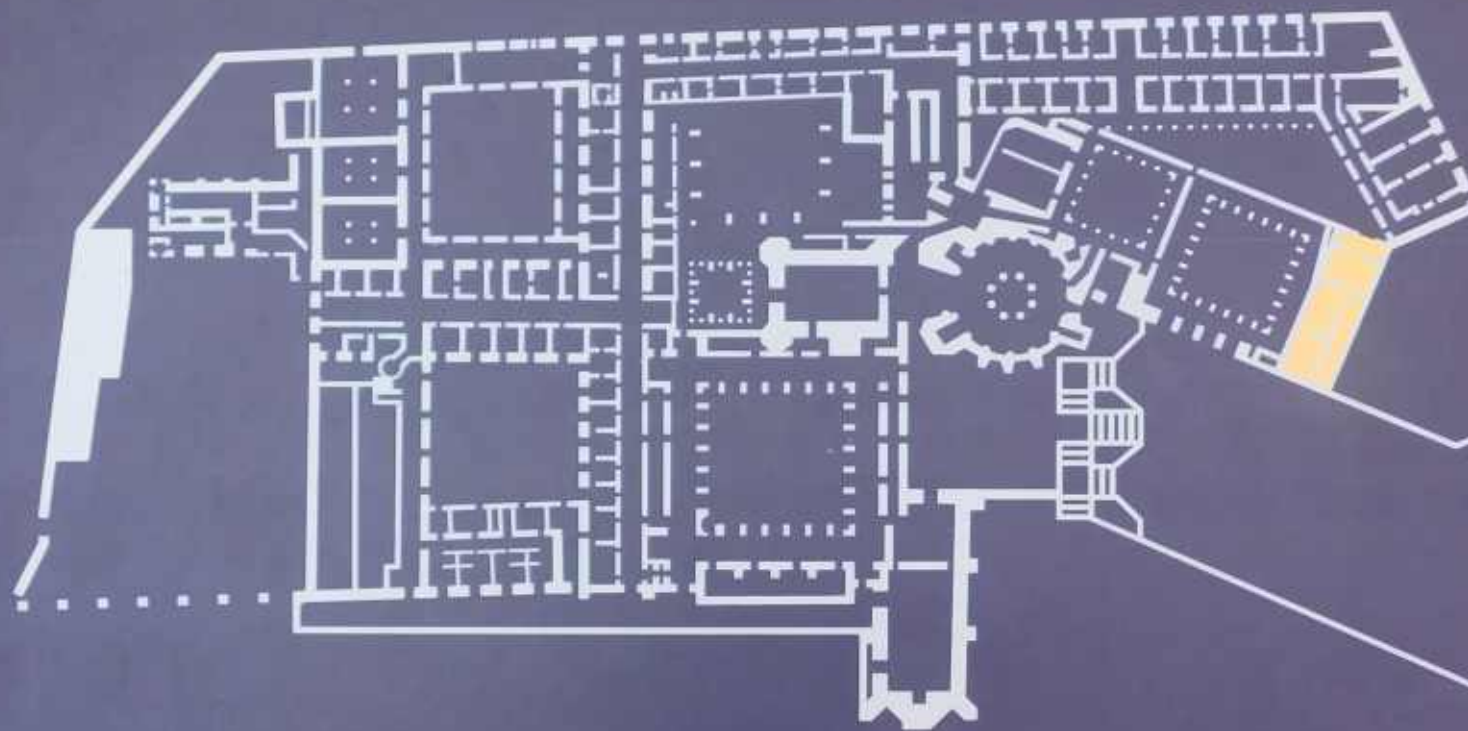


Prince Henry's Quarters

(view over the ruins)

Paços Henriquinos

(vista sobre ruínas)

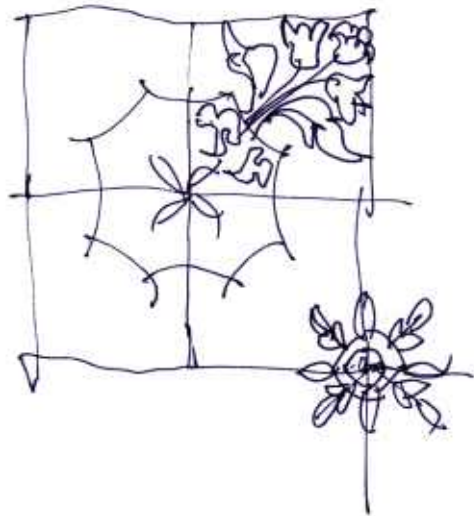
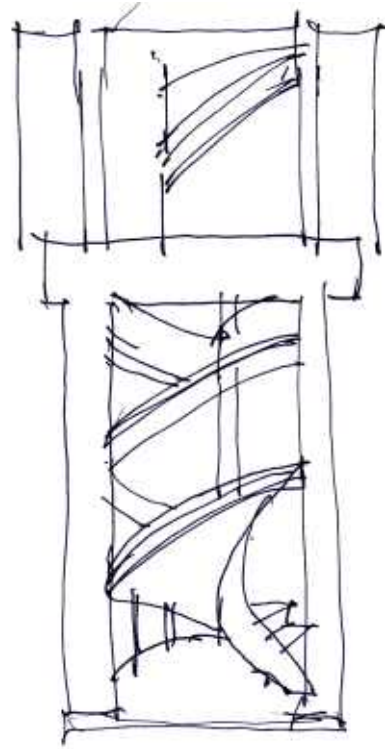
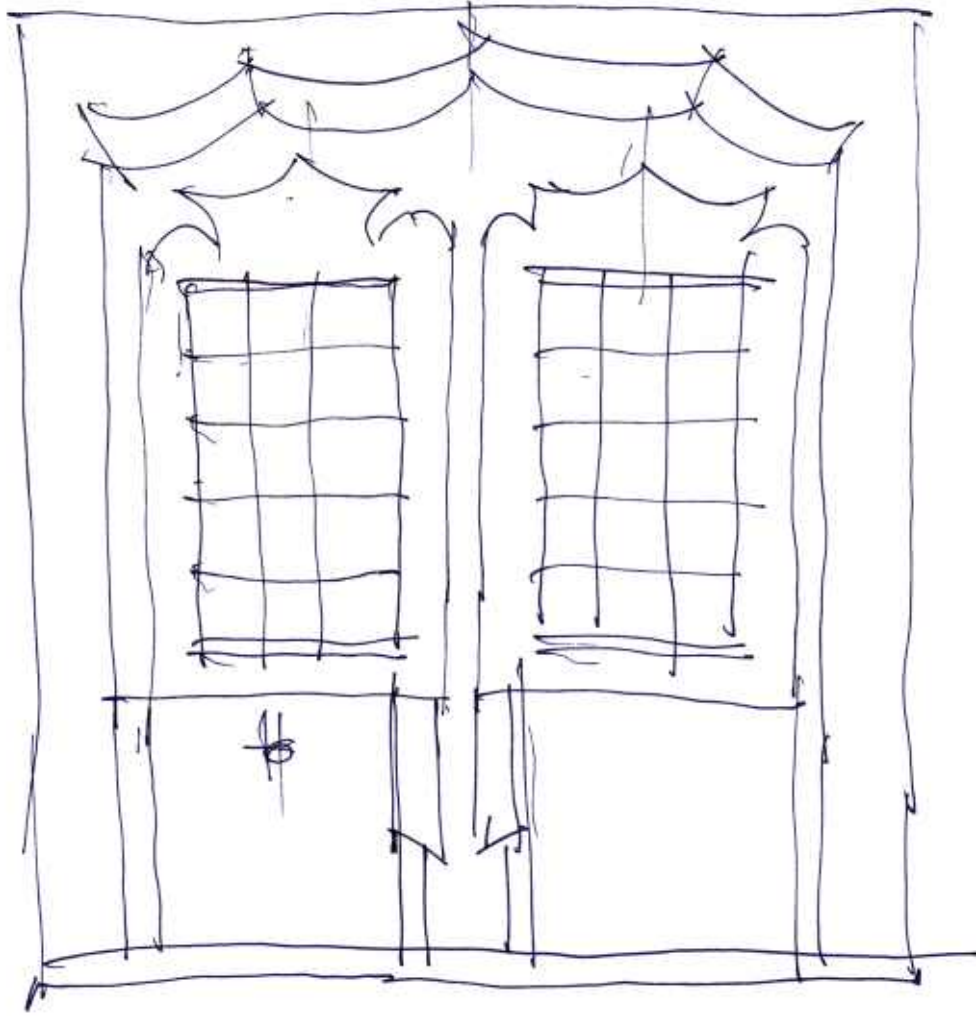


Prince Henry, Governor and Administrator of the Order of Christ resided in these buildings from 1420 to 1460.

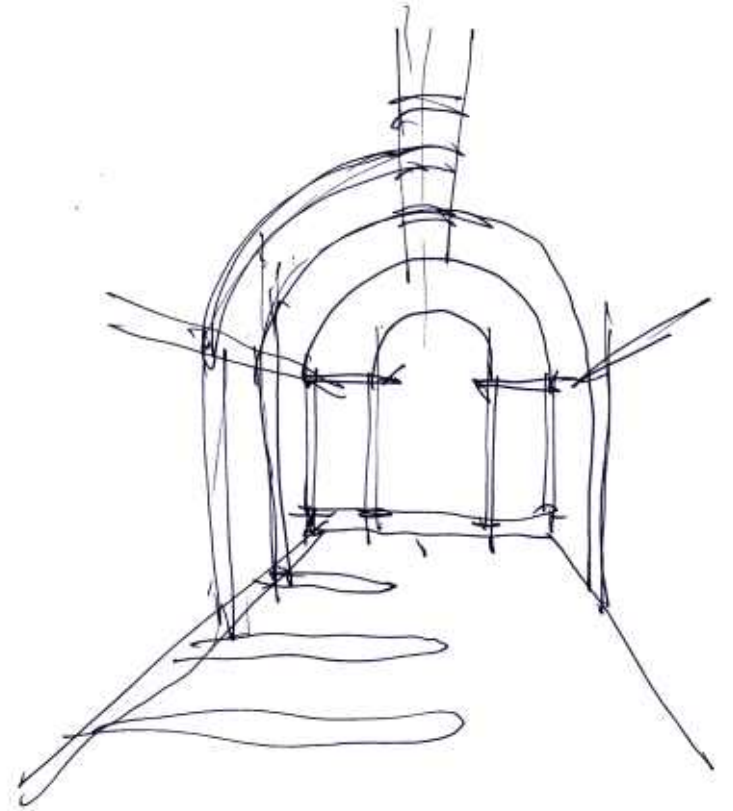
During the reigns of King Manuel (1495-21) and João III (1521-57) they were enlarged and transformed.

Estes edifícios serviram de residência ao infante D. Henrique, Governador e Administrador da Ordem de Cristo entre 1420 e 1460.

Nos reinados de D. Manuel (1495-21) e de D. João III (1521-57) foram ampliados e transformados.



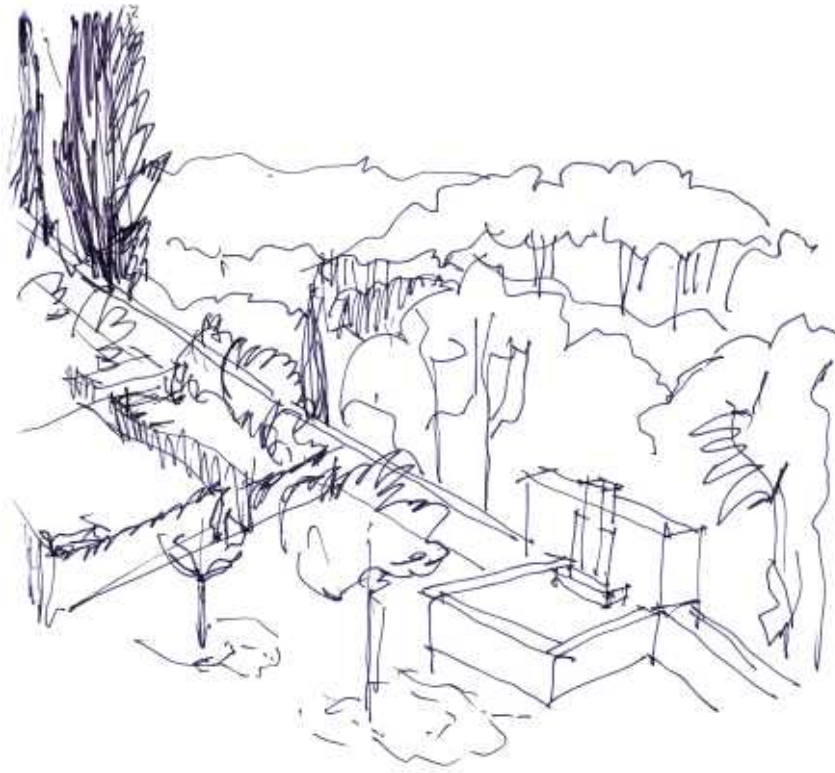
Amuro





THE ORDER OF THE KNIGHTS TEMPLAR
CASTELO DOS TEMPLARIOS
1760 BY D. GUALDIM PAIS

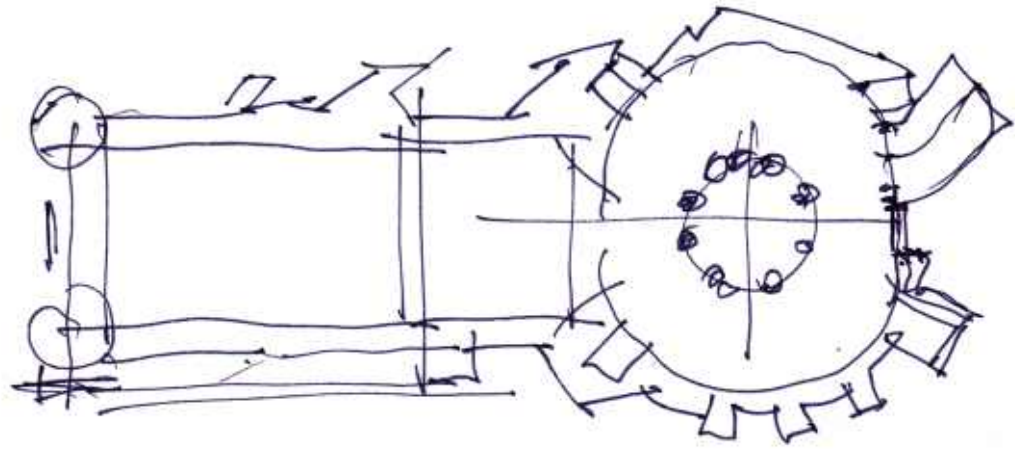
FORT
DO SOL

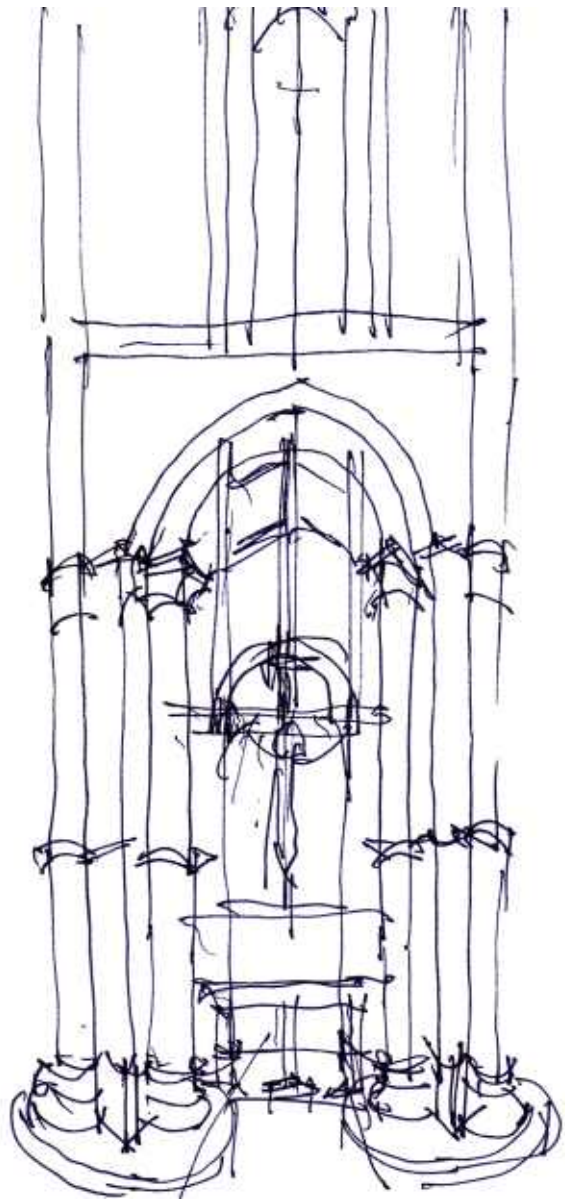


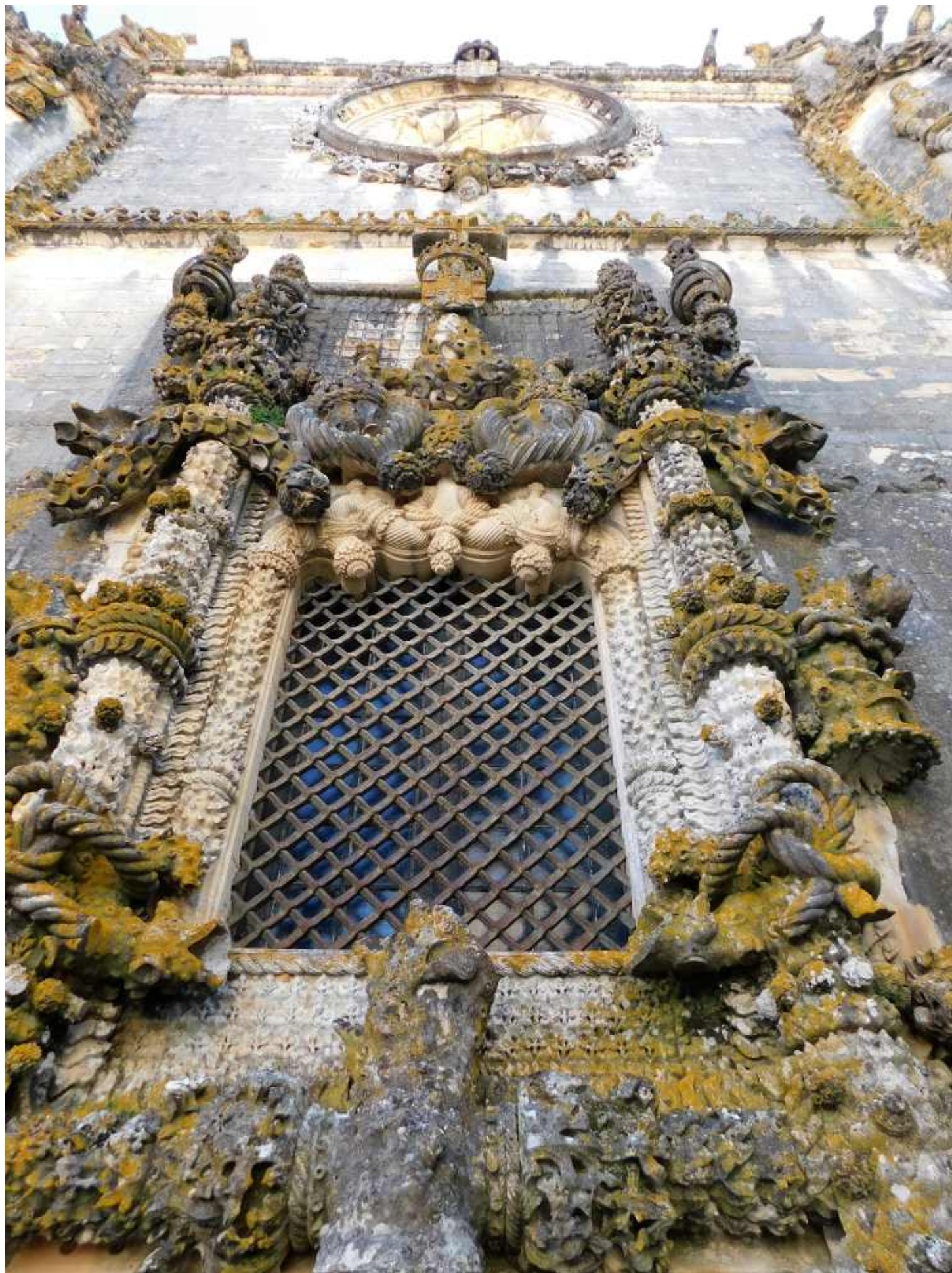
FONTRAX

THE TETIRAK
CASTLE
OF TOTAR



















Aqueduto dos Pegoes





Castelo de Almourol









Barquinha Parque





Parque Almourol



Centro Náutico
V. N. Barquinha
V. N. Barquinha
Nautical Centre



Barquinha Parque

Prémio Nacional de Arquitectura Paisagista 2007

Barquinha Park

Winner of the National Prize for Landscape/Scenic Architecture 2007

Este projeto de paisagem foi desenvolvido para o Parque Municipal de Barquinha, em Vila Rica, Minas Gerais, com o objetivo de criar um espaço público de lazer e recreação para a comunidade local. O projeto foi desenvolvido em conjunto com a comunidade local e o objetivo principal foi criar um espaço público de lazer e recreação para a comunidade local. O projeto foi desenvolvido em conjunto com a comunidade local e o objetivo principal foi criar um espaço público de lazer e recreação para a comunidade local.

The park project is a result of a collaborative effort between the landscape architect and the local community. The goal was to create a public space for recreation and leisure for the local community. The project was developed in collaboration with the local community and the main objective was to create a public space for recreation and leisure for the local community.



The concept of this riverside park came from two landscape architects Hipólito Bettencourt and Joana Sena Rego and enabled the replacement of the old nateiros (sedimentary flood deposits) of the Tejo with an immense green lawn where around 700 trees grow.



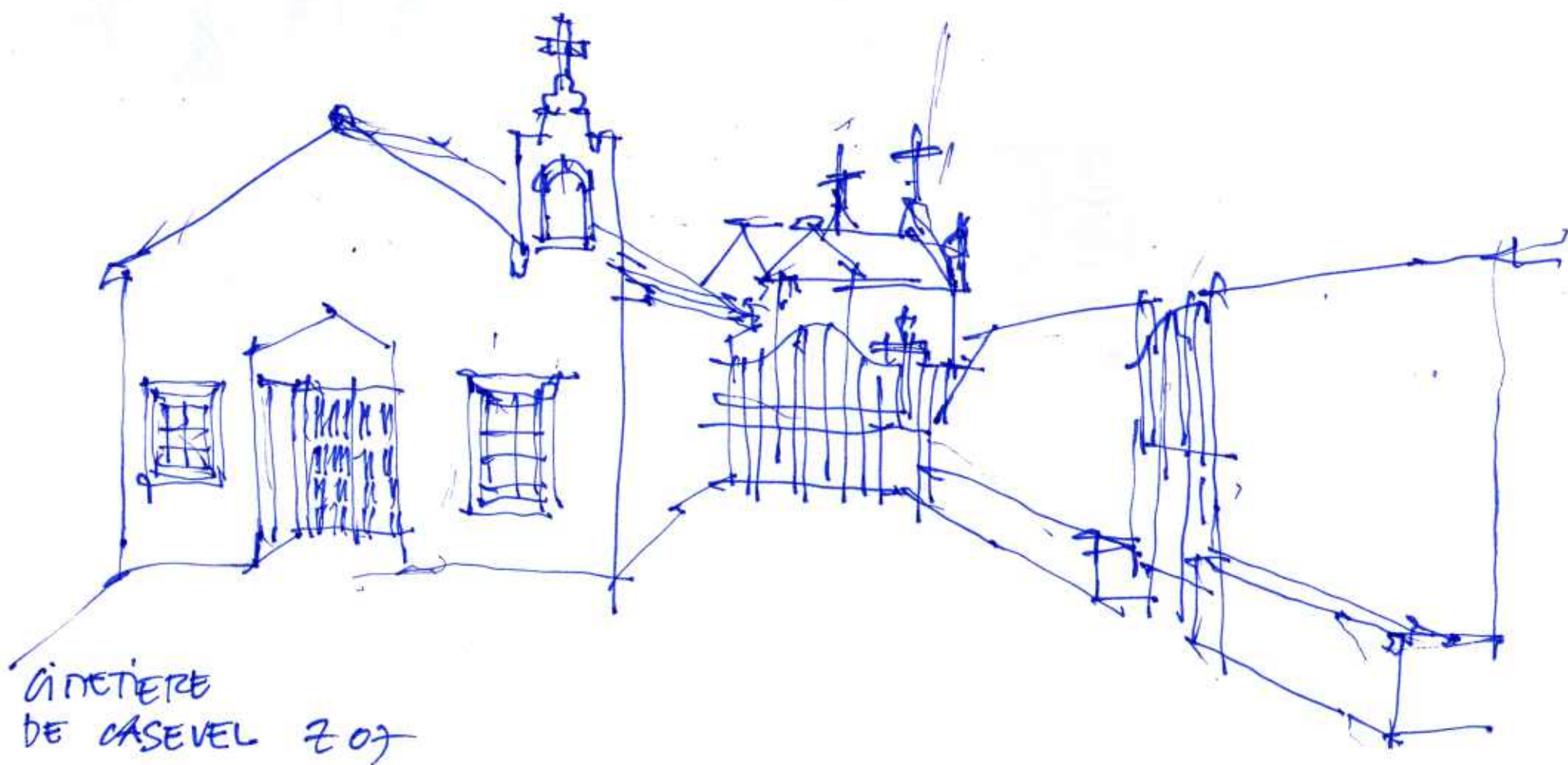
International workshop in Barquinha Parque





Caseval - Castro Verde





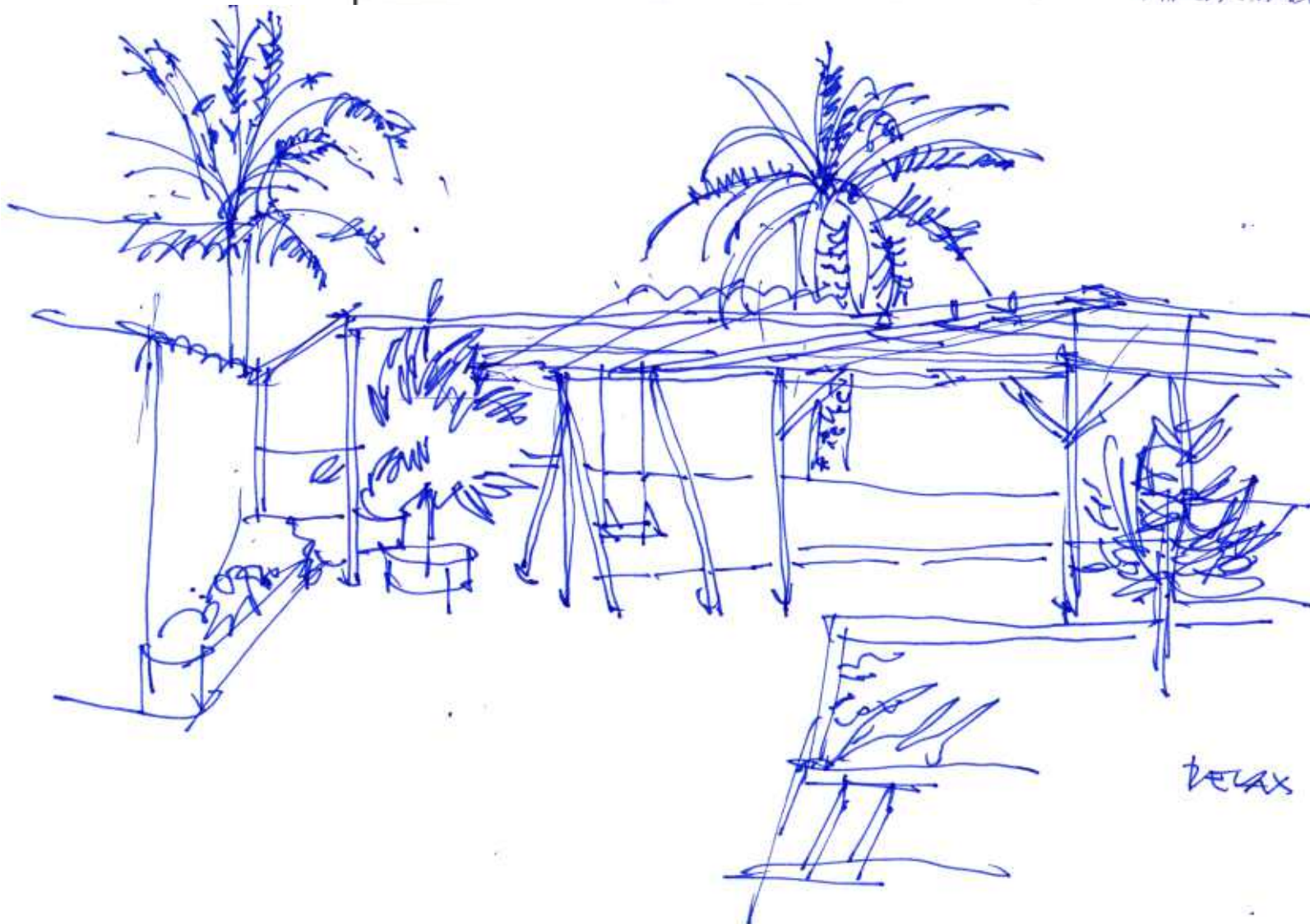
Santarém



Igreja da Graça



AGRADECIMIENTOS
CAYARA MUNICIPAL DE SANTAPETEN



RELAX SPACE

Castelo de Abrantes

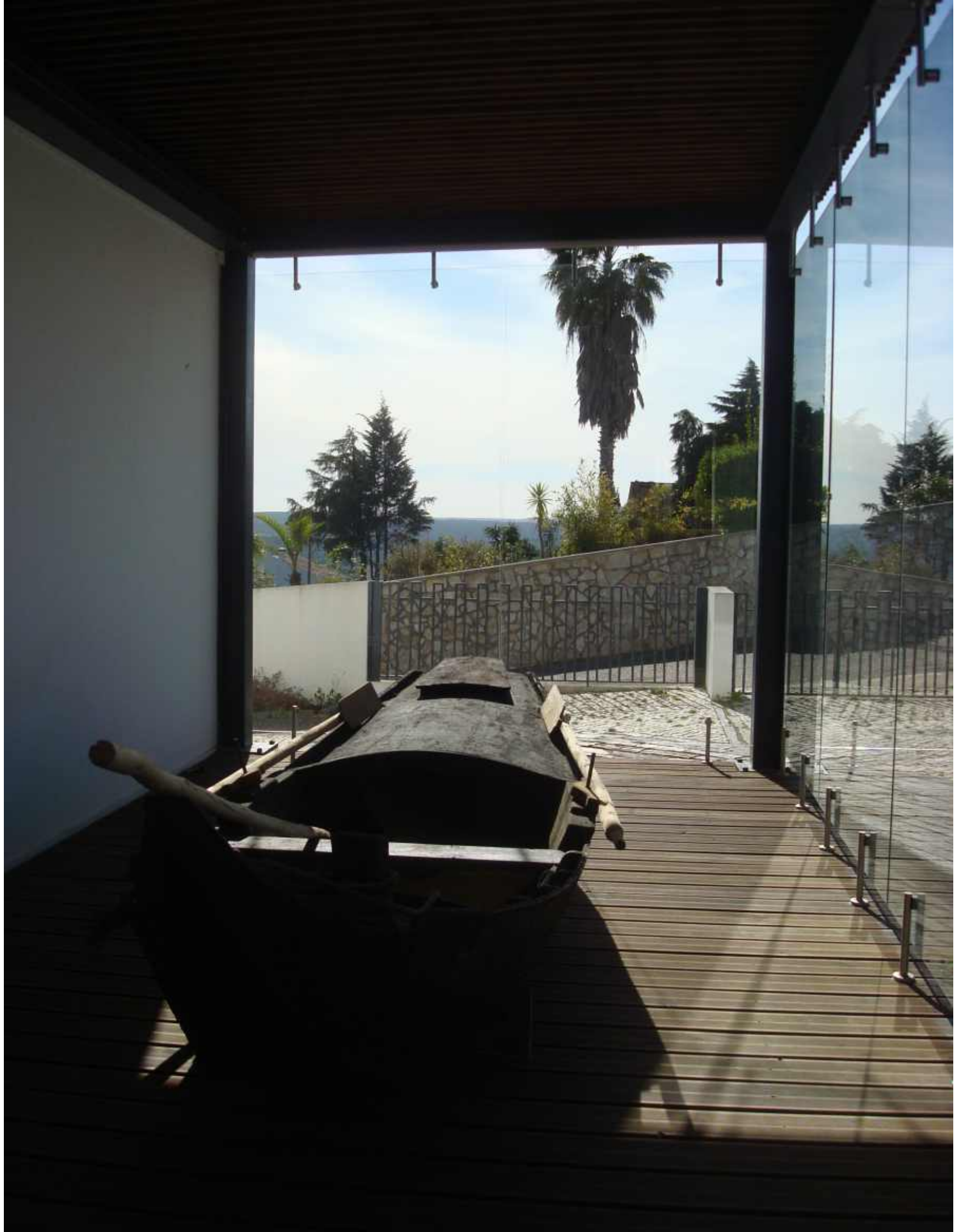




Antiga Igreja de Santa Maria do Castelo

Núcleo Museológico de Ortiga





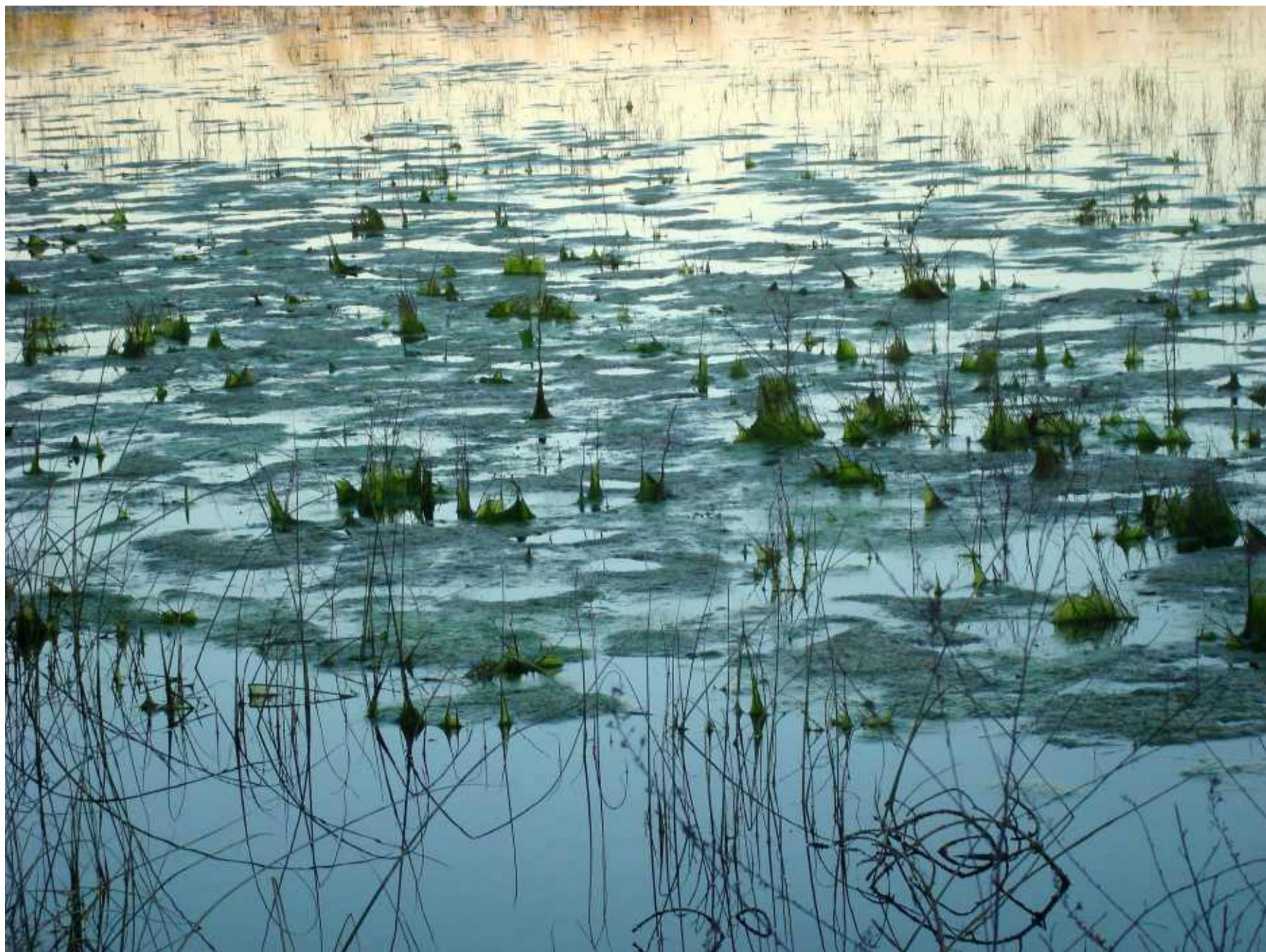




Paul do Boquilobo, reserva natural

















Tomar

one of the first medieval cities in Portugal,
a world heritage site revived
by the powerful influence of the Order of the Knights Templar.



Cultural complex Levanda in centre of Tomar, museum - an example of saving the heritage



Polytechnic Institute of Tomar





Acknowledgement

I would like to thank to all those who dedicated their time to me, accompanied me during Apheleia seminars and participated at informal discussions that resulted in making of this book.

My gratitude goes especially for advice and our long-term collaboration to:

Luiz Oosterbeek, Professor at the Polytechnic Institute of Tomar, President of the International Council for Philosophy and Human Sciences and UNESCO-IPT chair holder and to Professor Nuno Guimaraes da Costa.

For long - term and friendly collaboration to Larent Caron and Luis Santos, to cultural heritage manger Maurizio Quagliuolo, to archeologists Davide Delfino, and Fernando Coimbra. To long - term collaboration to the team of the Instituto Terra e Memoria and Anabela Pereira Borralhero, Professor Marta Arzarello for the kind friendship.

To architects Václav Zemánek, Ľubomír Kipila, Ivo Boháč, Max Witmann for their patient cooperation.

Dedication

The book is dedicated to all those who participated at the APHELEIA project, from its birth to implementation, organization and coordination.

To Professor Luiz Oosterbeek, his collaborators at the IPT and the team of the Instituto Terra e Memoria.

The book is dedicated to all the scientists, professors and experts, as well as to students and PhD students who accepted the project's invitation and granted the project a global dimension by their contributions.

Their active engagement at the international seminars, presenting the results of their expertise, the results of their doctoral theses as well as organizing workshops has greatly enriched all the participants.

The seminars were complemented by numerous excursions to the central part of Portugal, which have raised the awareness of the cultural heritage of Portugal.

The book is also dedicated to the guides of these excursions.

Finally, the dedication should include the Mação people, their cultural events, performance and musical evenings with Fado and presentation of crafts and prehistoric cooking.

Apheleia

Story: Helena Zemánková

Text: Luiz Oosterbeek, Helena Zemánková

Drawing, photos: Helena Zemánková

Pictures: A.C. Paredes Cardoso Centro Historico de Abrantes

Translation: Martina Skupeňová

Graphic concept: Helena Zemánková, Ľubomír Kipila

Graphic design and print preparation: Ľubomír Kipila, Lumina studio

Print: Legia spol s.r.o., Poříčí 5, Brno

Published by APHELEIA

ISBN: 978-80-214-6198-7



Helena Zemánková, the author of the publication, is a professor in the Department of Patrimony at the Faculty of Architecture, BUT, Czech Republic.

Her specialisation is Protection, Rescue, Conversion and Management and Valorisation of Cultural Heritage.

She holds the design studio at the Faculty of Architecture for Czech and foreign students and she has lectured and taught as a guest professor in several European universities and as expert for World Industrial Heritage in Japan.

Helena Zemánková complements her international activities, interventions, lectures, workshops, research projects, publications about the subjects of her specialisation by photography and drawing. It is the way an architect gets to know the environment, to uncover its potential, to be enchanted.

